



WIKATÜREN

Y-STRAINER

Model : 12.650
13.650
15.650

MODEL : 12.650 PN16 (1,6 MPa)
MODEL : 13.650 PN25 (2,5 MPa)
MODEL : 15.650 PN40 (4,0 MPa)

APPLICATIONS

Industrial cold and hot water (also for drinking water), steam, neutral fluids.

ADVANTAGES

- Screen made of stainless steel.
- Strong construction of screen.
- Cleaning of screen without disassembling.
- Asbestoss free.
- Environment-friendly.





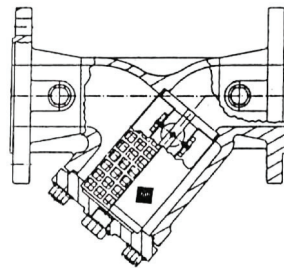
WIKATÜREN

Y-STRAINER

Model : 12.650
13.650
15.650

PN6, PN16, PN25				
STRAINER SCREEN				
SCREEN CARTRIDGES				
	OZNACZENIE	DN mm	MESH Ø	MESH SCREEN IN CM ²
Basic Design	F45	15-50	1.0	45
	F28	65-80	1.5	28
	F15	100-300	1.6	15
	F100	15-300	0.6	100
Additional Design	F200	15-300	0.5	204
	F300	15-300	0.4	280
	F400	15-300	0.32	370
	F600	15-300	0.2	625
Tin Plate Cartridge				
Special Design	F1.0	15-125	1.0	30
	F1.6	150-300	1.6	13
	F3.1	350-400	3.1	3
PN40				
Basic Design	15-20			0, 6
	25-65			0, 8
	80-150			1, 2
	200			2, 0

OPTIONAL → PN6, PN16, PN25	
.M	.E For Drinking Water
Magnetic cartridge OH18N9 (X5CrNi 189)	Epoxy Point
	RAL 5010 RAL 5017
Stud-Bolds, Hexagon Nuts	Stainless Steel
	Zinc Coated
Emplying Screw	Stainless Steel
	45(C45) Galvanizing
Certificate-National Institute of Hygiene poland	



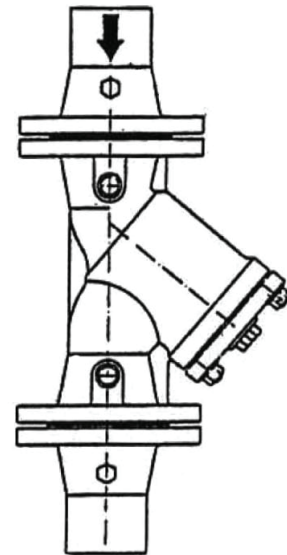
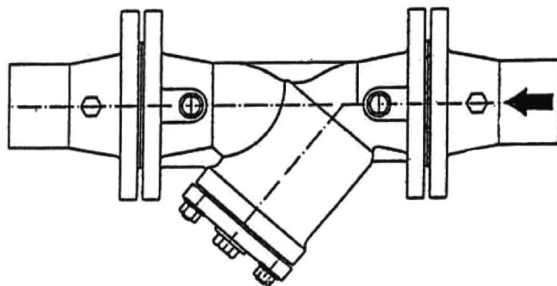
R	PN6, PN,16, PN25					PN40 *H	PN6	PN16	PN25	PN40	kv m/h	DN mm
	B	C	H	H1	*H							
G 3/8"	56	23	90	135	70	2.2	2.6	2.6	2.7	5.7	15	
	68	28	100	150	80	2.8	3.0	3.0	3.6	10.4	20	
	82	36	115	180	88	3.9	4.3	4.3	4.5	16.4	25	
	98	42	135	215	100	5.7	6.8	6.8	6.3	27.3	32	
	114	50	150	240	125	7.3	8.8	9.0	8.7	46.8	40	
	119	61.5	160	250	140	8.4	11.0	10.7	11.0	64.7	50	
G 1/2"	134	78.5	180	285	170	13.5	16.8	16.1	15.0	86.9	65	
	149	89.5	215	330	190	17.7	19.5	18.2	22.0	107.9	80	
	169	109.5	235	365	225	25.3	34.0	32.5	31.5	217.0	110	
	199	137.5	280	425	260	37.5	42.5	39.2	46.0	307.8	125	
	224	160	320	480	320	49.0	56.0	52.2	71.0	436.7	150	
	284	210	405	610	420	98.0	110.0	102.7	134.5	789.2	200	
G 1"	434	258	540	915	-	-	165.0	-	-	1061.0	250	
	555	308	680	1110	-	-	285.5	-	-	1250.0	300	
	640	365	755	1200	-	-	373.0	-	-	1800.0	350	
	695	415	835	1320	-	-	461.0	-	-	2200.0	400	

Emplying Screw

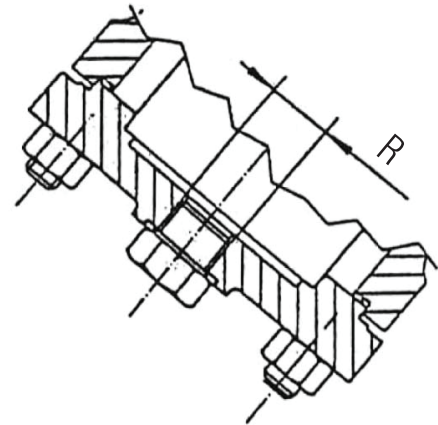


ASSEMBLING

Strainer should be installed in horizontal position, bonnet down. The installation in vertical position is possible when the flow is also from up to down.



PRESSURE TEMPERATURE									
DIN EN 1092-2; 1997									
EN GJL 250 (GG25)		ENG GJS 500 (GGG50)				GP240GH			
PN6		PN16		PN16		PN25		PN40	
°C	bar	°C	bar	°C	bar	°C	bar	°C	bar
-10	6	-10	16	-10	16	-10	25	-20	40
120	6	120	16	120	16	120	25	150	40
150	5.4	150	14.4	150	15.2	150	23.8	200	35
180	5	180	13.4	200	14.4	200	22.5	300	28
200	4.8	200	12.8	250	12.8	250	20.0	400	21
230	4.4	230	11.8	300	11.2	300	17.5		
250	4.2	250	11.2	350	8.8	350	13.8		
300	3.6	300	9.6						



EMPLYING SCREW

EN558-1;1995/1
(DIN3202 T1 Reihe F1)

Flanges Drilled ISO 7005-2: 1988
(PN-85/H74306,
DIN 2501)

Flange Type B → PN-EN 1092-2/DIN-EN 1092-2
C → DIN 2526

Ordering
When ordering please specify : Fig. and DN.

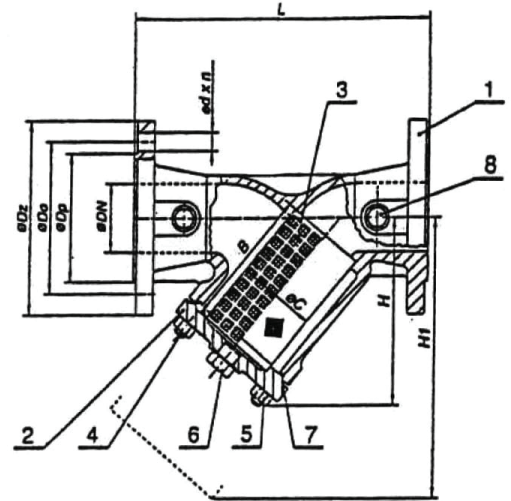


WIKATÜREN

Y-STRAINER

Model : 12.650
13.650
15.650

- | | | |
|------|---|----------|
| PN6 | (EN-GJL-250 → EN 1561, 250, GG25 → DIN1691) | DN15-200 |
| PN16 | (EN-GJL-250 → EN 1561, 250, GG25 → DIN1691) | DN15-400 |
| PN16 | 500-7 (EN-GJS-500-7 → EN 1563, GGG50 → DIN1693) | DN15-200 |
| PN25 | 500-7 (EN-GJS-500-7 → DIN EN 1563, GGG50 → DIN1693) | DN15-200 |
| PN40 | GP240GH (GS-C25) Werkstoff-DIN-NR 1.0619) | DN15-200 |



MATERIALS

NO.	PART NAME	MATERIAL		
		PN6, PN16	PN16, PN25	PN40
1	Body	EN-GJL-250	EN-GJS-500-7	GP240GH
2	Cover	(GG25)	(GGG50)	(1.0619)
3	Stainless Steel	OH18N9 (X5CrNi189)		
4	Studs	8.8	Ck35	Ck35
5	Hexagon Nuts	5	Ck35	-
6	Emplying Screw	45(C45) Galvanizing A2		Ck35
7	Gasket	CrNiSt-Graphite		
8*	Plug	G1/4"	45(C45) Galvanizing	-
-	Plug Gasket	A4 (WNR-1.4571)		

On Request (add. cost)

Note: Material in accordance to the polish standard, in brackets according to DIN.

DN	PN6					PN16				PN25				PN40			
	L	Dz	Dp	Do	nxd	Dz	Dp	Do	nxd	Dz	Dp	Do	nxd	Dz	Dp	Do	nxd
15	130	80	40	55	4x11	95	45	65	4x14	95	46	65	4x14	95	45	65	4x14
20	150	90	50	65	4x11	105	58	75	4x14	105	56	75	4x14	105	58	75	4x14
25	160	100	60	75	4x11	115	68	85	4x14	115	65	85	4x14	115	68	85	4x14
32	180	120	70	90	4x14	140	78	100	4x18	140	76	100	4x19	140	78	100	4x19
40	200	130	80	100	4x14	150	88	110	4x18	150	84	110	4x19	150	88	110	4x19
50	230	140	90	110	4x14	165	102	125	4x18	165	99	125	4x19	165	102	125	4x19
65	290	160	110	130	4x14	185	122	145	4x18	185	118	145	8x19	185	122	145	8x19
80	310	190	128	150	4x18	200	138	160	8x18	200	132	160	8x19	200	138	160	8x19
100	350	210	148	170	4x18	220	158	180	8x18	235	156	190	8x23	235	162	190	8x23
125	400	240	178	200	8x18	250	188	210	8x18	270	164	220	8x28	270	188	220	8x28
150	480	265	202	225	8x18	285	212	240	8x22	300	211	250	8x28	300	218	250	8x28
200	600	320	258	280	8x18	340	268	295	12x22	360	274	310	12x28	375	285	320	12x28
250	730	-	-	-	-	405	320	355	12x26	-	-	-	-	-	-	-	-
300	850	-	-	-	-	460	370	410	12x26	-	-	-	-	-	-	-	-
350	980	-	-	-	-	520	429	470	16x28	-	-	-	-	-	-	-	-
400	1100	-	-	-	-	580	480	525	16x31	-	-	-	-	-	-	-	-